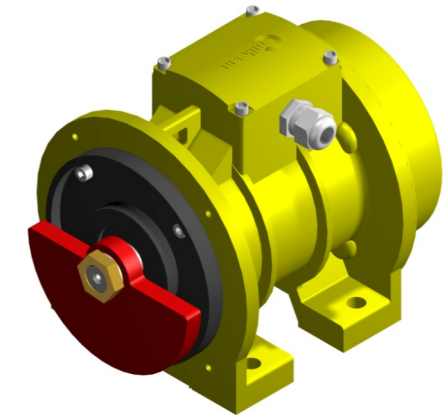




Soyalan Maschinenbau & Handel

Drehzahl 3000 1/min

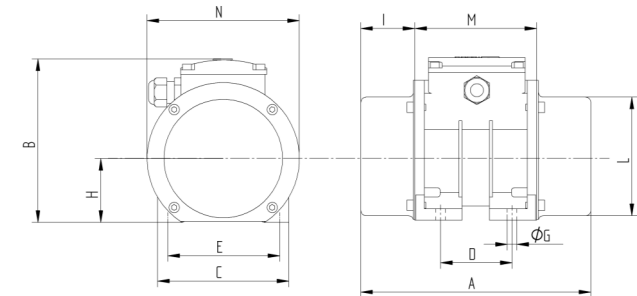


Technische - Daten					Motor - Daten			
RPM	Art.-Nr.	Zentrifugalkraft		Arbeitsmoment	Gewicht			
50 Hz		KG	N	kgmm	KG	V	A	kW
3000	VA 2-80	80	785	8	6.2	230/400	0.60/0.35	0.17
	VA 2-120	120	1177	12	6.6	230/400	0.60/0.35	0.17
	VA 2-200	200	1962	20	7.0	230/400	0.60/0.35	0.17
	VB 2-350	340	3335	34	10.2	230/400	0.87/0.50	0.22
	VC 2-500	500	4905	50	14.5	230/400	1.55/1.90	0.44
	VD 2-750	762	7475	76	21.3	230/400	1.90/1.10	0.69
	VD 2-1100	1048	10281	104	22.3	230/400	2.34/1.35	0.75
	VE 2-1500	1480	14519	147	51.3	230/400	5.20/3.00	1.30
	VE 2-1800	1770	17364	176	52.0	230/400	5.20/3.00	1.30
	VE 2-2400	2360	23152	234	54.0	230/400	6.00/3.50	1.60
	VG 2-3000	2960	29038	294	70.0	230/400	8.70/5.00	3.0
	VG 2-3800	3745	36738	371	72.0	230/400	8.70/5.00	3.0
VH 2-4800	4800	47088	471	91.0	230/400	13.1/7.6	5.0	

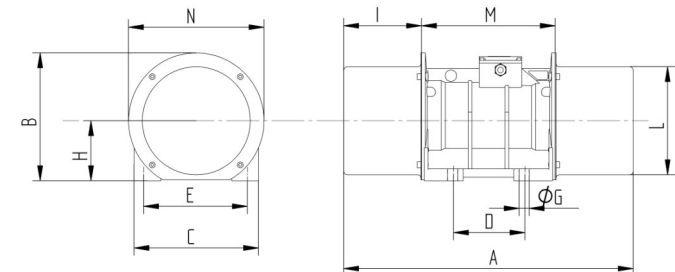
Maße in mm

Art.-Nr..	A	B	C	D	E	ØGx4	H	I	L	M	N	Kabelanschluß	Typ.
VA 2-80	219	156	125	74-62	106	9	62	51.5	113	116	145	M20 x 1.5	1
VA 2-120	219	156	125	74-62	106	9	62	51.5	113	116	145	M20 x 1.5	1
VA 2-200	219	156	125	74-62	106	9	62	51.5	113	116	145	M20 x 1.5	1
VB 2-350	285	175	152	90	125	13	75	66.5	130	152	162	M20 x 1.5	1
VC 2-500	247	196	172	95	140	13	86	47.5	151	152	191	M20 x 1.5	1
VD 2-750	368	232	210	120	170	17	109	89	188	190	230	M20 x 1.5	1
VD 2-1100	368	232	210	120	170	17	109	89	188	190	230	M20 x 1.5	1
VE 2-1500	428	253	235	140	190	17	116	85	212	259	274	M20 x 1.5	2
VE 2-1800	428	253	235	140	190	17	116	85	212	259	274	M20 x 1.5	2
VE 2-2400	428	253	235	140	190	17	116	85	212	259	274	M20 x 1.5	2
VG 2-3000	522	277	270	155	225	22	130	116	238	290	294	M20 x 1.5	2
VG 2-3800	522	277	270	155	225	22	130	116	238	290	294	M20 x 1.5	2
VH 2-4800	548	334	310	155	255	23.5	160	119	292	310	330	M25 x 1.5	2

Typ. 1



Typ. 2



Soyalan Maschinenbau & Handel
 inh. Halil Soyalan
 Von - Eichendorff Str.22
 86899 Landsberg am Lech
 Tel.: +49(0)8191-4287584-Fax: +49(0)8191-4287585
 Web.www.soyalan.de / E- Mail . infosoyalan.de